

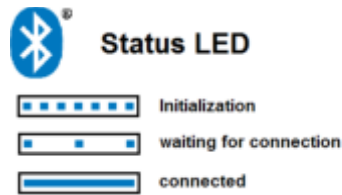
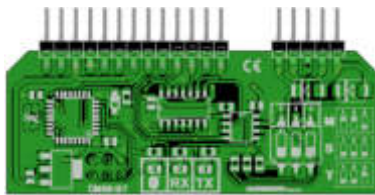


Plug-in card module CM08-BT (Bluetooth)

Installation:

Installation of BT module:

- Installation of the antenna (different depending on the type, screw or magnetic base)
 - The antenna must be installed outside of the controller housing.
 - The connection to the Bluetooth module must be established. (If the connection from the boiler room is weakened too much, there is the possibility for upgrading with an external unit via an RS485 connection).
- The module only works with the communication base board CM08 and higher.
- The slot on COM-C must be free.
- Insert the Bluetooth module in the "COM-C" slot, **be sure to remove the jumpers J1-3!**
- The module now starts with the initialization (this takes about 30 seconds).
 - The  LED (blue) flashes every 0.5 seconds, and the RX LED (red) flashes at the same time.
- When the initialization has been completed and the controller has been successfully recognized, the  LED only flashes briefly every 5 seconds. (see graphic).
 - In the case of a "default setup" of the control device, a new initialization must be started.
 - This can only be achieved by briefly disconnecting the power supply.



Settings on the controller:



- Check the controller software (version 8.19 or higher) and update if necessary.
 - The control is carried out by pressing and holding the "ESC" key.
 - If you need an update, please contact the operator of your system.

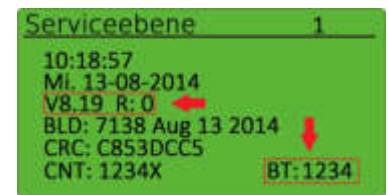


Plug-in card module CM08-BT (Bluetooth)

Configuration:

Configuration on a tablet or smartphone:

- Configuration of the connection on the tablet or smartphone:
- Download and install the remote app (- downloads) www.schneid.at
- Select the app and select BT connect.
- Select "Search" in the pop-up window.
- The module appears with the following identifier: **CM08-BT-XX-x**
The default value for this is "1234".
- After the connection has been successfully established, the message "Enter new pin code" appears.
 - A new code must be entered and confirmed with "OK". This serves to protect against unauthorized access by strangers and must therefore be adapted.
 - To check or if the code has been forgotten, it can be shown on the controller display via the "Service level 1" display (see Fig. Below).
- As soon as a connection has been successfully established, the  LED on the Bluetooth module lights up continuously.
 - At the same time, the RX and TX LEDs flash, signaling data exchange.
 - You can access further information on the operation of the remote app using the  info button.



Plug-in card module CM08-BT (Bluetooth)

Visualization app:

The SCHNEID visualization apps have been specially developed for end customers. With the help of a Bluetooth module or SinVis access, they have the option of accessing your control system in the house. The most important operating parameters can be viewed and configured via the apps. The end customer is thus given complete control over the control by means of remote access. This ensures that the control can also be optimally controlled and monitored from the outside if necessary. The operating instructions for the app are integrated in the program.



Plug-in card module CM08-BT (Bluetooth)

Terminal plan BT module and subcom:

If sub-communication with other controllers is also to be established in parallel, the following must be observed:

- Sub-communication is only possible via the RS485 interface.
The BT module has this already integrated. A CM08-485 interface card must then be used for the other controllers. The bus cabling and the RS485 termination are carried out according to an RS485 sub-communication. (Dip switch settings as for RS485).
The baud rate is selected according to the distances to the individual sub-controllers.
Addressing takes place as required for the subcom with address 0 for the master and 1-x for the slaves.
- The Bluetooth connection is then started up again as described above.
It should only be noted that in this case the address and baud rate of the Com-C on the controller may no longer be adjusted, since these have been set according to the sub-communication.
- The Bluetooth module automatically adapts to the parameters (address and baud rate) set on the controller for Com-C during initialization.
- If the Bluetooth module was put into operation before the interface parameters (address or baud rate) were changed, the Bluetooth module must then be initialized. This can only be achieved by briefly disconnecting the power supply.

Further information:

- A Bluetooth module can be used on the master controller or on one or more slave controllers.
- The Bluetooth module only ever transmits the data of the controller in which the module is installed.
- It is not possible to record several controllers with one Bluetooth module.
If you want to record several controllers via the Bluetooth module, a separate Bluetooth module is required for each controller.

