

# Plug-in card module CM-MBM-80



Schneid GesmbH | Gewerbering 16 | A-8054 | Graz/Pirka | Tel: +43 (316) 285022

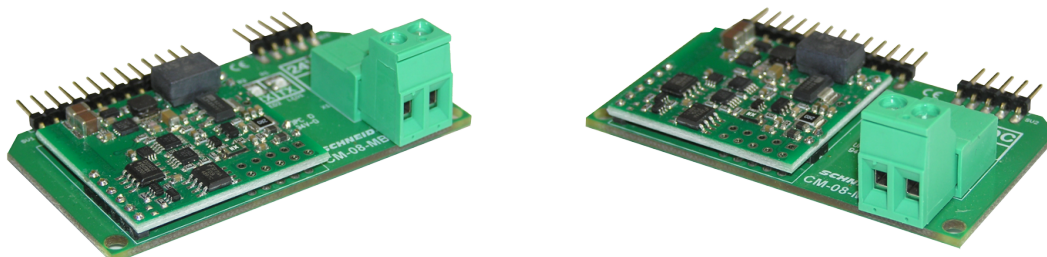
Products, data sheets, documentation, MR12-SCHEMA-calculator: [www.schneid.at](http://www.schneid.at)

## SCHNEID plug-in card module CM-MBM-80 (MBus-Master-80)

for SCHNEID communication base modules

Order number: 130.13670

Order code: Steckkartenmodul CM-MBM-80



### Overview:

The SCHNEID plug-in card module CM-MBM-80 is only suitable for the SCHNEID communication basic modules of the module control series.

With this module card, the control device represents an MBus-MASTER in an MBus data network and can thus read, for example, heat meters or other MBus slave devices.

The number of slave devices can be up to 80.

In addition, a 24VDC power supply with at least 10W is required.

### Terminal plan:

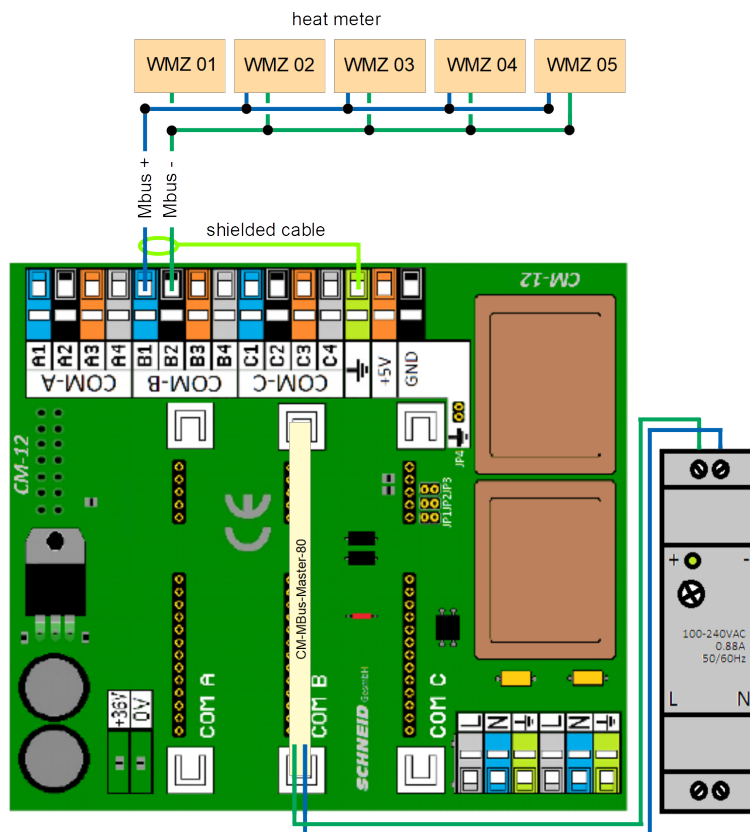
The terminal assignment refers to the respective slot.

|       |                |
|-------|----------------|
| COM-A | Terminal A1-A4 |
| COM-B | Terminal B1-B4 |
| COM-C | Terminal C1-C4 |

### Connection to terminals:

|   |        |
|---|--------|
| 1 | MBUS + |
| 2 | MBUS-  |
| 3 | MBUS+  |
| 4 | MBUS-  |

# Plug-in card module CM-MBM-80



## Scope of delivery:

SCHNEID plug-in card module CM-MBM-80

## Technical specifications:

|                              |                             |
|------------------------------|-----------------------------|
| Intrastat Number             | 8537.10.91.90               |
| Country of origin            | EU/AT                       |
| Height, width, depth (in mm) | 42x65x19                    |
| Weight (in kg)               | 0,019                       |
| Degree of protection         | IP-00                       |
| Ambient temperature          | 0°C....+40°C                |
| Operating voltage            | 5VDC + 24VDC                |
| Power consumption            | 5mA @5V // 250mA @24VDC     |
| Max baud rate                | 19200 Bit/s                 |
| Connection type              | Pin headers for base module |
| Mounting type                | Plug-in card module         |
| Operating time               | Continuous operation        |
| Degree of pollution          | 2                           |